

Innovative GBR Kit and Tent screw

Easy GBR with Tent screw™



Neo GBR Kit?

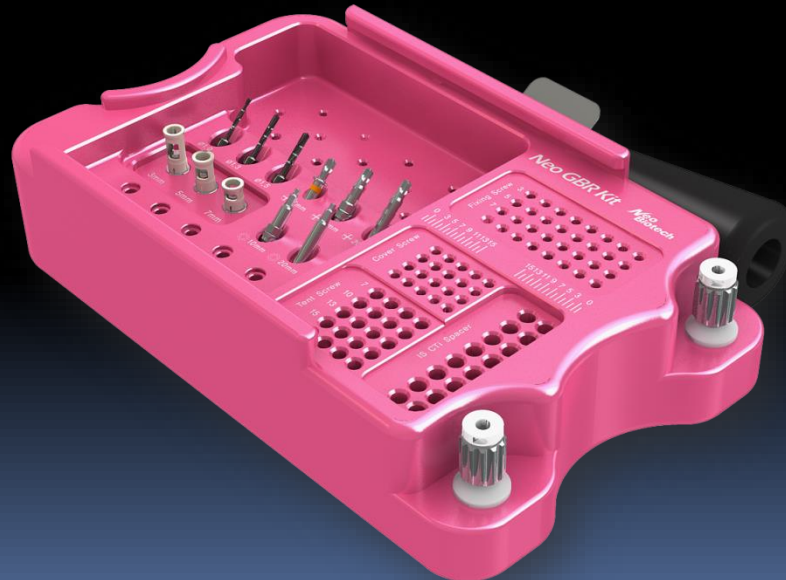
Component

Instruction guide

Sales tip

Clinical case

Neo GBR Kit?



Innovative GBR Kit and Tent screw

Easy GBR with Tent screw™

Neo GBR Kit?

Component

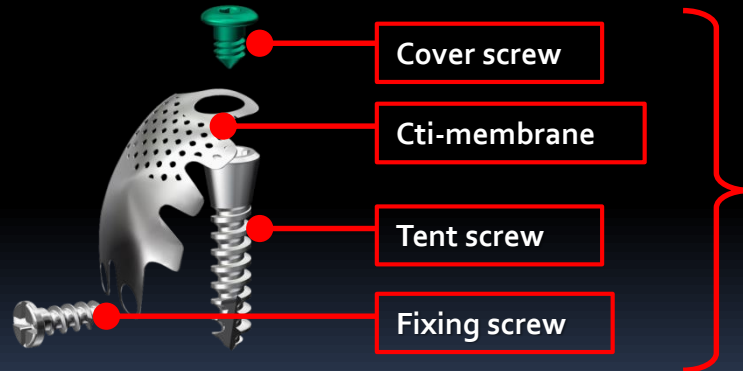
Instruction guide

Sales tip

Clinical case

Total Solution to GBR procedures.

World's First Innovative GBR Kit



1. In order to fix membrane and maintain space for vertical augmentation, introduce **Tent screw concept** for the first time
2. **Convenience** to fix and remove membrane by using special cover screw
3. Offers a **total solution of innovative GBR procedure**, by using **Cti-mem** together.

Innovative GBR Kit and Tent screw

Easy GBR with Tent screw™

Neo GBR Kit?

Component






- Page 1

- Page 2

Instruction guide

Sales tip

Clinical case

Items	Product Name	Size	Amount
	✖ Tent Screw	Ø2.0*7mm Ø2.0*10mm Ø2.0*13mm Ø2.0*15mm	2 Ea
	✖ Fixing Screw	Ø1.6*3mm Ø1.6*5mm Ø1.6*7mm	4 Ea
	✖ Cover Screw	M1.6, L:3mm	8 Ea
	Drill	Ø1.0/ L:10mm Ø1.3/ L:10mm Ø1.5/ L:10mm	1 Ea
	Stopper	3mm 5mm 7mm	1 Ea

✖ Separate optional items apart from the Basic Kit component

Innovative GBR Kit and Tent screw

Easy GBR with Tent screwTM

Neo GBR Kit?

Component

- Page 1

- Page 2

Instruction guide

Sales tip

Clinical case

Items	Product Name	Size	Amount
A long, silver-colored metal handle with a hexagonal base and a green ring near the tip.	Dual Hex Driver (Handle)	Hex1.0/1.6, L:15mm	1 Ea
Two silver-colored metal drivers with hexagonal bases and green rings, one longer than the other.	Dual Hex Driver (Contra angle)	Hex1.0/1.6, L:15mm Hex1.0/1.6, L:20mm	1 Ea
Three silver-colored metal drivers with Phillips heads and orange rings, of increasing length.	Phillips head driver	Ø1.6*3mm Ø1.6*5mm Ø1.6*7mm	1 Ea
A black handle with a red, textured grip and a silver-colored metal tip.	Driver Handle		1 Ea
A silver-colored metal driver with a hexagonal base and a green ring.	1.2 Hex Driver	Hex1.2, L:15mm	1 Ea

Easy GBR with Tent screwTM

Neo GBR Kit?

Component

Instruction guide

- Page 1
- Page 2
- Page 3
- Page 4
- Page 5

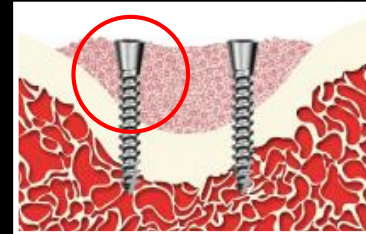
Sales tip

Clinical case



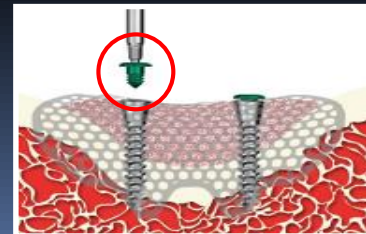
Tent Screw

Place Tent screw instead of
Fixture and gain **1st vertical
augmentation**



Cover Screw

Connect directly to the
Tent screw and **fix the
membrane in its place
and retain Space**



Innovative GBR Kit and Tent screw

Easy GBR with Tent screwTM

Neo GBR Kit?

Component

Instruction guide

- Page 1
- **Page 2**
- Page 3
- Page 4
- Page 5

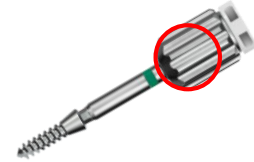
Sales tip

Clinical case



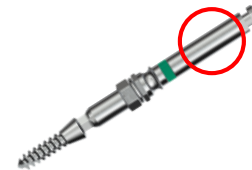
Dual hex driver - handle

Utilized during placement or removal of the Tent and Cover screw



Dual hex driver – Contra angle

Utilized during placement or removal of the Tent and Cover screw



Innovative GBR Kit and Tent screw

Easy GBR with Tent screw™

Neo GBR Kit?

Component

Instruction guide

- Page 1
- Page 2
- **Page 3**
- Page 4
- Page 5

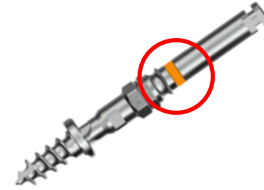
Sales tip

Clinical case



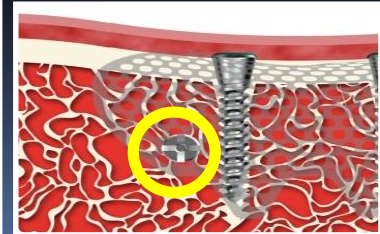
Phillips driver

Utilized when placing Fixing screw



Fixing screw

Fixed on the Membrane preventing any movement by external pressure



Innovative GBR Kit and Tent screw

Easy GBR with Tent screwTM

Neo GBR Kit?

Component

Instruction guide

- Page 1
- Page 2
- Page 3
- **Page 4**
- Page 5

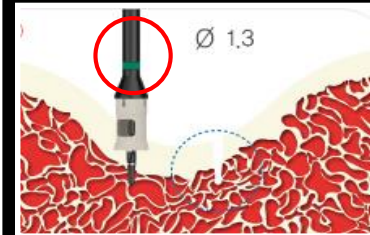
Sales tip

Clinical case



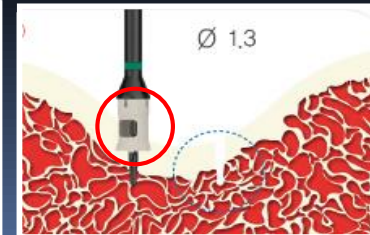
Drill

Forms Hole to place Tent and
Fixing screw



Drill stopper

Connected to the Drill to
advance up to the wanted
length while Drilling



Innovative GBR Kit and Tent screw

Easy GBR with Tent screwTM

Neo GBR Kit?

Component

Instruction guide

- Page 1
- Page 2
- Page 3
- Page 4
- **Page 5**

Sales tip

Clinical case



Handle driver

During hand-held placement
or removal utilizing Driver for
Contra angle



1.2 Hex driver

Commonly used 1.2Hex
included for user comfort

Easy GBR with Tent screw™

Neo GBR Kit?

Component

Instruction guide

Sales tip

- Page 1

- Page 2

- Page 3

Clinical case

Q

When placing Tent screw how deep must it be placed?

A

Secure Space can be maintained when placed approximately **4~5mm** deep with **20~25 N.cm** of force.
If Shallowly placed Tent screw can not earn strong stability so it must be at least 4~5mm deep.

Q

Are the Tent screws compatible with Hex driver by other companies?

A

No, it is not.

Because the inner structure of the Tent screw is a Dual Hex system of **ø 1.0 / ø 1.6**

Easy GBR with Tent screwTM

Neo GBR Kit?

Component

Instruction guide

Sales tip

- Page 1

- **Page 2**

- Page 3

Clinical case

Q

Are the Tent or Fixing screw single use only?
Can't it be reused after sterilization?

A

For Tent screw, there is a **possibility of infection** once the it has been used as a Temporary Implant so it is not recommended.

Fixing screw has a narrow-spaced Thread so once it's been used there is a **possibility of deformation in Thread** and cause instability. And since the connection part is small, screw that has been used already might cause looseness in connection with the Driver during Surgery.

Easy GBR with Tent screwTM

Neo GBR Kit?

Component

Instruction guide

Sales tip

- Page 1

- Page 2

- Page 3

Clinical case

Q

Can the Fixing screw be utilized with Jaeil Medical's GBR system kit?

A

No, it can not.

Fixing screw is a Neobiotech's independent standard size so not only Jaeil Medical but none of the other companies' +drivers can be used either.

Q

Because the Tent screw or the Fixing screw is thin doesn't it break or be distorted during placement?

A

If it is done within 20~25 N.cm there shouldn't be any problem at all.

Innovative GBR Kit and Tent screw

Easy GBR with Tent screwTM



Neo GBR Kit?

Component

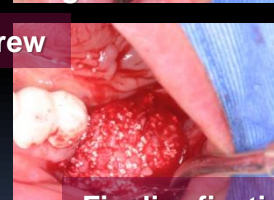
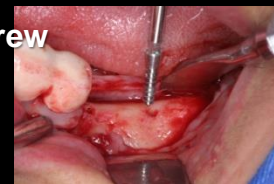
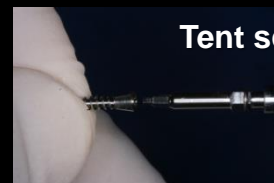
Instruction guide

Sales tip

Clinical case

- Page 1

- Page 2



Innovative GBR Kit and Tent screw

Easy GBR with Tent screw™

Neo GBR Kit?

Component

Instruction guide

Sales tip

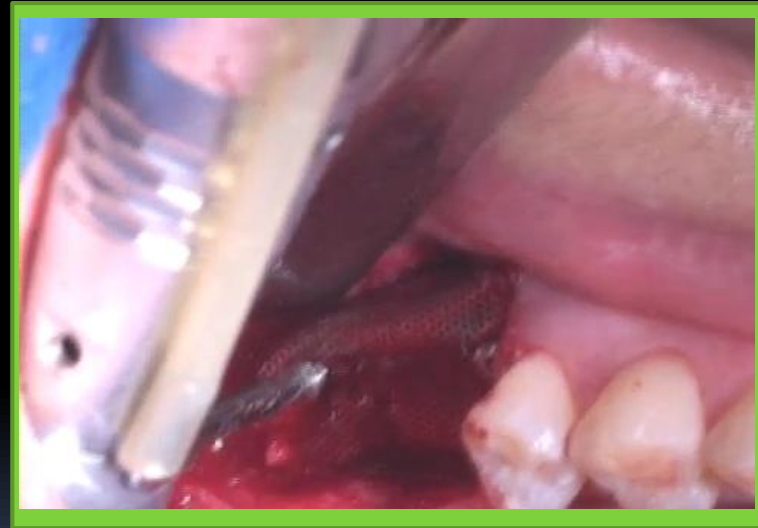
Clinical case

- Page 1

- Page 2



Demonstration(10')



Clinical case(3'02'')